

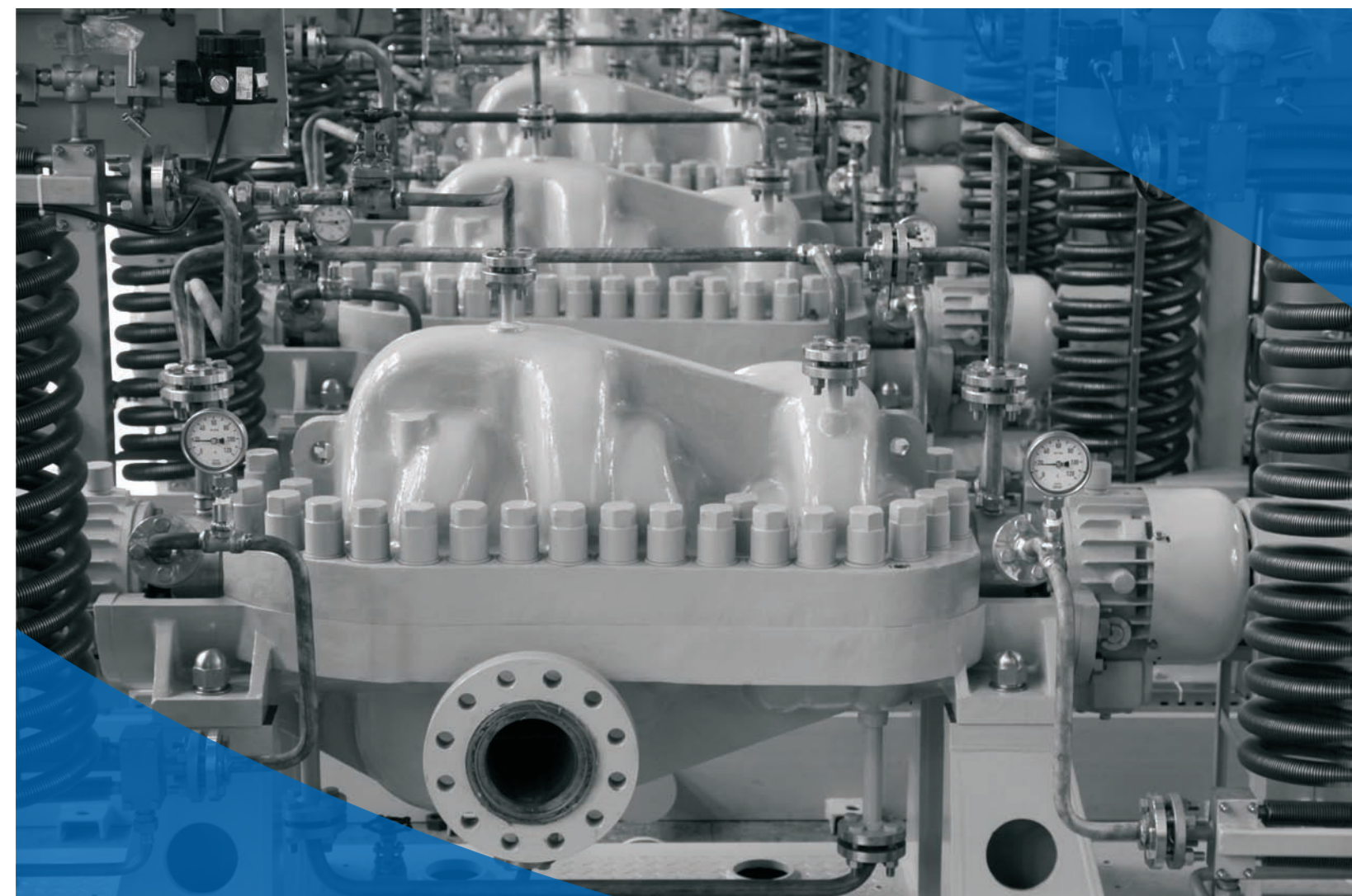


真诚期待与您合作
Look forward to working with you



TANE PUMP

湖南天一奥星泵业有限公司
Hunan Tane Ocean Pump Co.,Ltd.



湖南天一奥星泵业有限公司 Hunan Tane Ocean Pump Co.,Ltd.

地址: 中国·湖南·平江 天岳大道806号
电话: 0730-6285737 传真: 0730-6289075
邮箱: hntane0908@163.com
网址: www.taneax.com

Add: No.806, Tianyue Road, Pingjiang, Hunan, China
Tel: +86-730-626 1515 Fax: +86-730-626 1516
eMail: sales@taneax.com
Web: www.taneax.com

了解更多详情请访问 MORE...

泵送系统解决方案: www.taneax.com
泵产品介绍: www.tanepump.com

请扫二维码:

左(公司网站)
LEFT (WEBSITE)
右(微信公众号)
RIGHT (WEIXIN)



GENERAL CATALOGUE

综合样本

我们的口号 --- Our Slogan
我们用心浇灌生命
We irrigate the life with our soul and heart



TANE

天一

大自然非凡力量的概括世间一切
事物的原动力《易》曰：『天一生水』
水，孕育了天地万物循环无端，
生生不息有水的地方就有生命
有水的地方就能创造人间奇迹
正如天一奥星的永恒和它正在
创造的今天和明天的骄人业绩

目录

CONTENTS

01/10

Company
公司

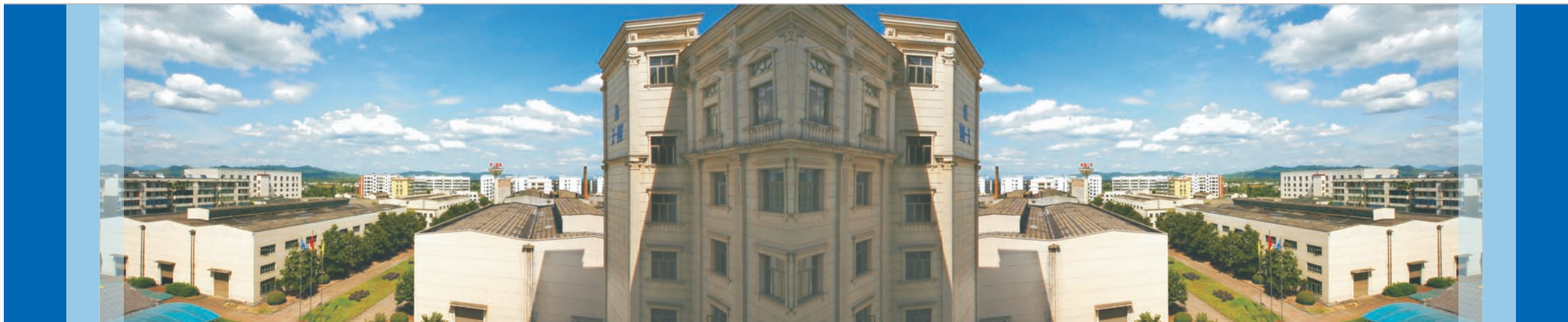
11/31

Products
产品

32/42

Achievements
业绩

公司简介 Company Profile



湖南天一奥星泵业有限公司是中国长城资产管理有限公司旗下的全资子公司，是集设计、制造、销售、服务于一体的石油、化工离心泵专业生产厂家。公司是法国道达尔（TOTAL）全球泵类产品供应商、中石化五星级供应商、中石油、中海油、中航油、中化、延长石油优秀供应商，湖南省著名商标、湖南省高新技术企业、国家火炬计划高新技术企业以及湖南省质量信用AAA级企业。

公司始创于1958年，具有六十多年流体机械制造历史。现有员工300人，工程技术人员60余人，注册资金一亿元，占地面积约10万平方米，拥有现代化的加工及装配车间，先进的理化室、计量室、全数字化泵系统测试中心，其最大测试功率达5000KW。

公司主要生产符合API610标准的BB1、BB2、BB3、BB4、BB5、OH1、OH2、OH3、OH4、VS1、VS4、VS6型泵以及通用型单级双吸中开泵、端吸泵、节段式多级泵、立式长轴泵、潜水泵、消防泵等。

公司通过了美国石油协会 API Spec Q1体系认证及ISO9001、ISO14001、OHSAS18000、HSE(中石油、中石化)体系综合认证、CCS(中国船级社)产品型式认证、消防认证；KDY型卧式水平中开多级输油泵产品获国家重点新产品、节能型产品称号；其中输油泵的密封环、多级叶轮定位机构、新型注水泵、油田热采机组、化工泵、海水淡化泵、多级中开泵等分获多项国家专利证书，产品技术达国际先进水平。

公司每年投入大量资金进行技术创新，与国内重点高校和科研院所保持紧密合作，使更多新技术与新工艺不断在公司产品研发中得到应用。公司产品在许多国内重点工程得到广泛应用，并先后出口至六十多个国家与地区，成为全球泵市场领域内领先的供货商。

顾客满意至上，品质铸就伟业；体系持续改进，科技创造未来。“天一”竭诚欢迎您的莅临指导。

Hunan Tane Ocean Pump Co.,Ltd which is wholly-owned by CHINA GREATWALL ASSETS Company, is a professional petroleum and chemical centrifugal pumps manufacturer integrating design, manufacture, sales and -service.Tane Ocean is one of the global pump supplier of French TOTAL , five star supplier of Sinopec, excellence supplier of CNPC, CNOOC,CNAF, SINOCHEN and YANCHANG OIL, Hunan Famous brand enterprise, high-tech enterprises, national Torch plan high tech enterprises, and Hunan AAA quality Credit grade of HUNAN enterprises.

Tane Ocean was founded in 1958 with a history of fluid mechanical manufacturing more than 60 years, now there are 300 employees with 60 technical engineers. The register capital is 14.5 Million USD, with overall area about 24.7 acres. Tane Ocean have modern machining and assembly workshop, advanced material laboratory, Fully digital pump system test center, which maximum test power is 5000kW

Tane Ocean Pump's main products include BB1, BB2, BB3, BB4, BB5, OH1, OH2, OH3, OH4, VS1,VS4, VS6 according to API 610 standard and Split Casing Pump, End suction pump, Sectional Multistage Pump, Vertical Turbine Pump, Submersible Pump for Water Application, Fire pump.

Tane Ocean Pump have achieve API Spec Q1, ISO9001, 14000, 18000, HSE (CNPC and Sinopec) 4 CCS and Coal safety certificate and firefighting certificate. The main products, Oil transportation win the National key new product and energy saving product. Several patents are acquired like wear ring oil pump, position fixed structure in multi stage, new style water injection pump, oil filed thermal recovery technology, chemical pump, high pressure seawater desalination pump, and multistage HSC pump. Tane Ocean Pump technology reached the international first class level.

Everything for client satisfaction, Vision for quality, Keep improve system, Science and technology creat the future, We sincerely welcome friends all over the world to visit us



资质证书 Honorary Certificate



资质认证 Patent Certificate



荣誉证书 Certificate of Honor



设计和工程项目 Design & Engineering



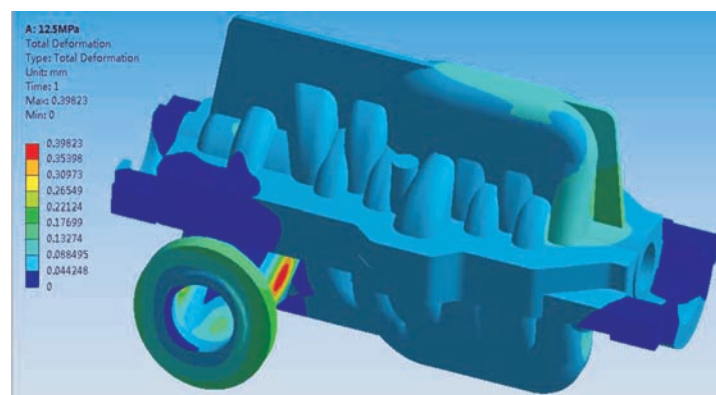
Product Development

六十多年从事流体机械设计生产的历史，优秀的专业设计队伍和强大的产品设计开发能力，完善的工艺流程，能够根据客户的不同需要提供满意的产品。

公司产品全部采用CAD和Solidworks等先进的工程设计软件进行辅助设计。主要产品符合API610, DIN, ISO等国际标准。多年的设计经验和先进的计算机处理方案为工程技术人员提供了如结构分析、震动分析、噪音分析、水锤仿真等详细的设计数据。

采用PDM系统对产品相关的信息（包括电子文档、数字化文件、数据库记录等）和产品相关的过程（包括工作流程和更改流程）进行管理，并且对产品进行全生命周期的信息管理。

Technical requirement and specification are carefully studied by competent design engineers allocated to these jobs, in order to cover a wider aspect in their documentation. Extensive experience and advanced technology backed-up by its research and development activities are the winning factors in successful design of pumps. Computers assist our engineers by given detailed design data, the products are design with the help of CAD system & Solidworks, Our major products are in the compliance with the standard of API610, DIN, ISO etc. PDM system of product related information (including electronic documents and digital files and database records) and product related process (including the work flow and change flow. Management, and the information management of the whole life cycle of the product.

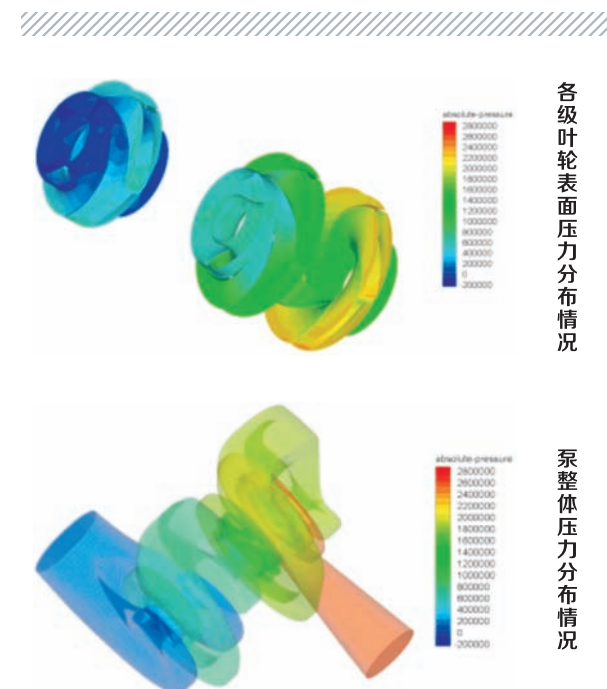
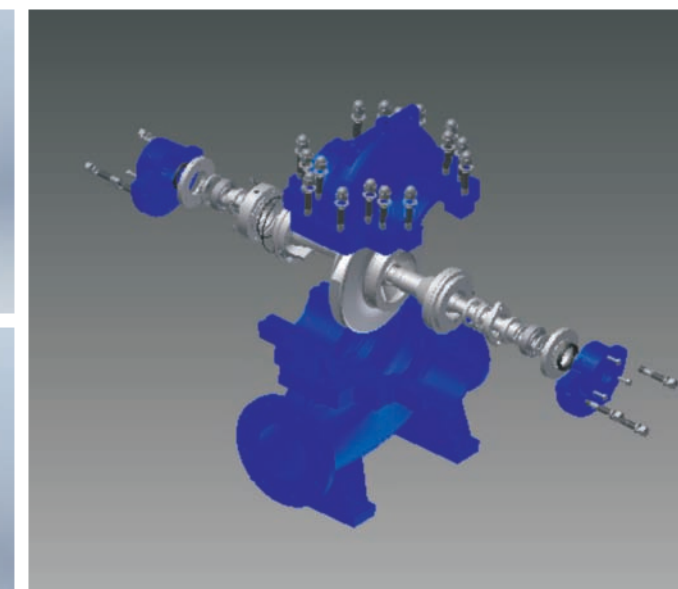
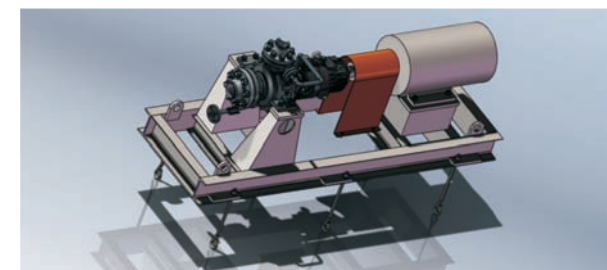
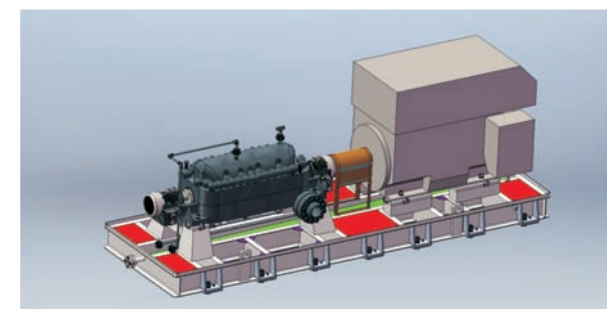


研发工作和新技术 Research & Development

公司每年在新技术研发上投入大量的人力和财力，进行水力设计及分析、三维建模、流场分析、有限元分析及数控加工的一体化。CAD和CFD的有效结合，减少了泵的设计时间，降低设计成本，保证产品高性能。公司将先进的自动化及通信、监测技术运用到泵机组上，为用户提供泵机组远程监测、控制。

引进美国特殊涂料喷涂技术，使泵效及产品的耐腐蚀性与寿命得到大大提高。

TANE PUMP spend a lot of manpower and financial resources every year in new technology like hydraulic design and analysis, 3D modeling, Fluid field analysis, Finite element analysis and Numerical control machining. The efficiency combine of CAD and CFD, shorter the design time, lower the design cost and improve the pump quality. The pump set use advanced automatic and telecommunication technology, provide the remote monitoring and control functions for customers. The pump's wet parts are coated by Special Paint Spraying to improved the efficiency and against abrasion and corrosion.



CFD技术 计算机仿真计算及流场分析 Simulation and analysis of flow field

为保证设计的可靠性、缩短供货周期，公司利用CFD流场分析软件对水力模型进行计算机仿真，模拟泵内部流场，消除漩涡回流，减少设计偏差，准确地预测泵的流量、扬程、效率、必需汽蚀余量等性能参数。

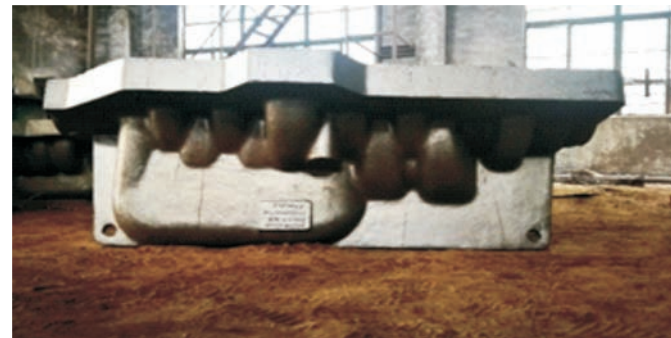
In order to ensure the reliability design and shorter the delivery time, We use CFD software to simulate the hydraulic model and internal flow field, remove the vortex and reflux, deduce design deviation. CFD is also able to predict the pump performance data like capacity, differential head, efficiency, NPSHr. etc.



模具与铸造 Model & Casing

先进的数控开模技术，其中多级泵采用全新组合模具，系列化程度高；与国内知名铸造公司合作，保证铸件的高品质。

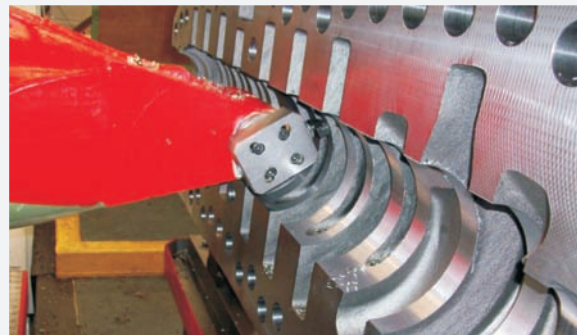
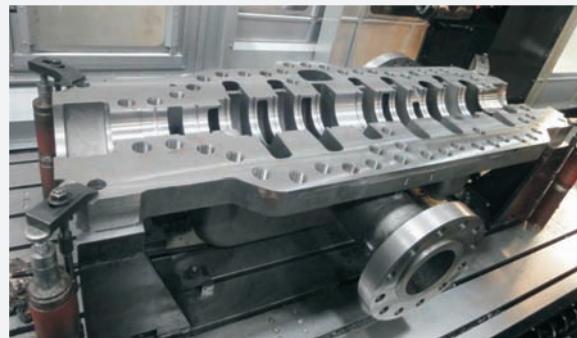
Advanced NC mold, and complete new combination molds have been used for multistage pumps, which have a high seriation, cooperate with the famous casting company to ensure high quality of casting



产品加工 Machining

公司建有两个现代化的机加工车间，有进口的加工中心，大型数控立车，数控镗床，龙门刨，六米外圆磨床和卧式车床等先进加工设备，可自行完成公司所有产品的加工工作。

Materials which have been thoroughly inspected are placed on the machining line where they are turned, drilled, bored, milled and ground into various precision components. Tane Ocean always endeavors to upgrade its machining facilities to respond to the diversification of pumps.



产品装配 Assembly

经过严格检验的零部件进入总装车间进行整机装配，公司拥有多条专业的装配线负责不同产品的组装。

All the spare parts are strict checked before delivered into the assembly shop. Several professional assembly line are used to fitting different pumps.



检验和质控

Service Range

从原材料进厂到整机完成测试出厂，严格的产品流程检验为产品的质量提供了保障。

公司可根据不同的产品及标准，制订完善的产品检验方案，满足产品生产需要。

The rigid inspection performed after each step of the production process, from raw material to finished products assures the highest quality in products.

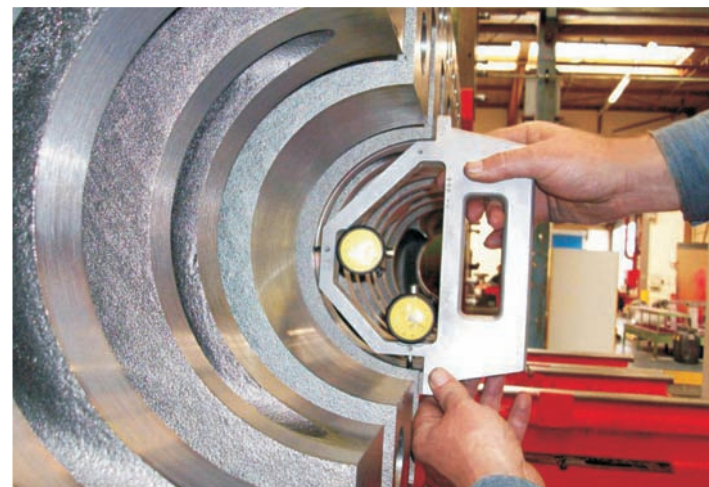
Tane Ocean Pump's inspection facilities and experienced inspection specialists can comply with any kind of inspection in accordance with the required standards and specification.

- | | |
|--|--|
| 1 量具检测
Measuring Tool Checking | 2 冲击试验
Impact test |
| 3 直读光谱仪
Direct-reading Spectrometer | 4 材料拉伸试验
Material Tensile Testing |



精益求精，追求卓越

Keeping improving
striving for excellence



- | | |
|-------------------------------------|--------------------------------------|
| 1 PT 检查
PT Inspection | 2 加工尺寸检测
Dimension Checking |
| 3 泵体水压试验
Pump Casing Hydrotest | 4 动平衡检测
Dynamic Balance Testing |



出厂试验

Test



公司的测试中心吊装行车为50吨，最大起吊高度为12米，试验水池为8000立方米，深度为20米，最大测试功率达5000千瓦，适合各种不同泵的测试要求，所有测试可实现自动化操作，方便快捷；测试精度符合GB/T3216标准1级精度，ISO9906标准1级精度要求。

Application in all kind of pumps testing requirement. Max crane lifting weight 50tons, Max lifting height 12m. Test pool volume 8000m³, 20m depth, testing power up to 5000kw, Automatic pump testing process with more convenience, accuracy and reliability. Compliance with the accuracy requirements in GB/3216 Grade 1 and ISO9906 Grade 1.



售后服务

After Service

产品备有充足的配件库存，专业的售后服务人员为客户提供及时的现场服务，并可根据客户要求，为客户作专业的技术培训服务，为客户提供产品安装调试指导。

Enough stock of the spare parts, special engineers for after service and overseas representative offices can give all the clients good service on time.



主要产品

Main Products



OUR PRODUCTS
最优设计，赢在细节
BEST DESIGN, SERVICE, DETAIL, IDEA FOR YOU!

TSY

单级双吸中开式离心泵

Single Stage Double Suction Horizontal Split Casing Centrifugal Pump

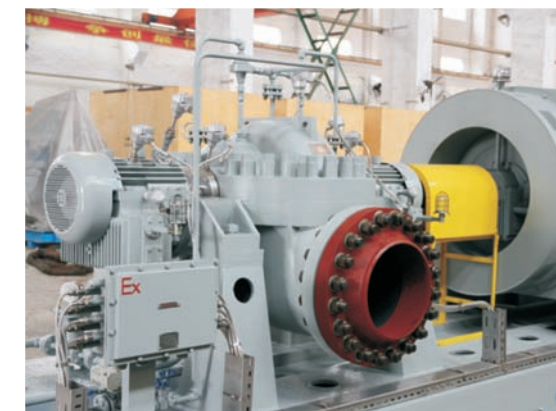
BB1

API610

✓ 泵型 Model 执行标准 Executive Standard
API610 BB1 According to API 610 standard

✓ 参数范围 Performance Range
流量 / Capacities: Q ~20000 m³/h
扬程 / Heads: H ~320m
温度 / Temperatures: T ~205℃
设计压力 / Design Pressure: P ~15 MPa

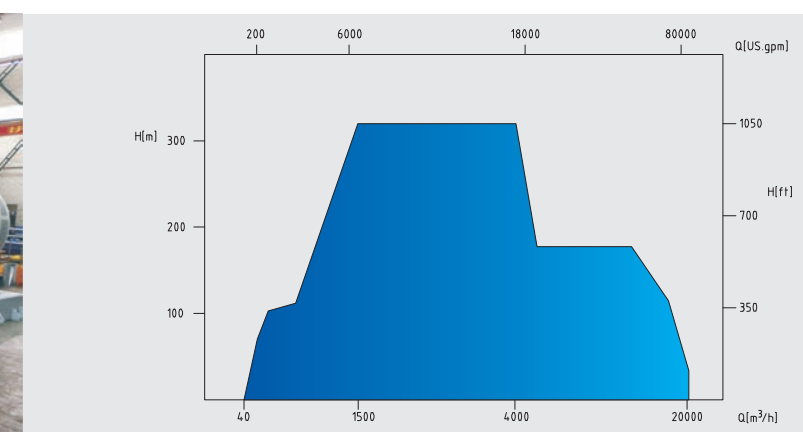
✓ 适用范围 Applications
长输管道 / 原油、成品油输送 / 其他液体化工产品输送
Long distance pipeline transportation
Crude Oil & Product Oil transportation
Other Liquid Chemical production transportation



Feature 特点

单级双吸卧式中开设计，使泵的轴向力得到平衡。中开式结构使泵维修时无需拆卸管路系统，多种轴承结构设计可满足不同场合的工作需要。

Single stage, Double suction, Horizontal Split casing structure to balance axially force. and the pipeline need not change when repairing pump. Several bearing structure design to meet the request of different working condition.



KY, KSY

两级中开式离心泵

Horizontal axial split double stage centrifugal pump

BB1
API610

- ✓ 泵型 Model 执行标准 Executive Standard
API610 BB1 According to API 610 standard

✓ 参数范围 Performance Range

流量 / Capacities: Q ~8000m³/h
扬程 / Heads: H ~ 500m
温度 / Temperatures: T ~ 205℃
设计压力 / Design Pressure: P ~10MPa



主要用于石油开采、石油化工、化工、煤化工、管线输送等。

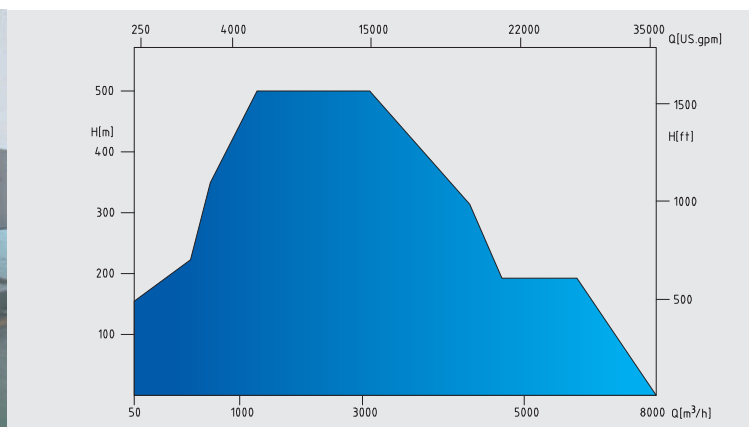
Application: Mainly for Crude oil exploitation, petrochemical engineering, chemical engineering, coal chemical engineering, pipeline Transportation.



Feature 特点

其中KY为首级单吸两级离心泵，KSY为首级双吸两级离心泵。中开式结构，进出口接管在下泵体上，打开上泵体就可检查或维修转子内件。

Features: KY is 2 stage pump with first stage ,single suction, KSY is 2 stage pump with first stage double suction, horizontal split casing structure, suction and discharge nozzle are intergrated in the lower casing, for maintenance and repairing rotor parts only have to disassemble the upper casing.



SKSY

双进口卧式中开多级离心泵

Double Inlet Horizontal split Casing Multi-stage centrifugal Turbine Pump

✓ 参数范围 Performance Range

流量 / Capacities: Q 2000~8000 m³/h
扬程 / Heads: H 150~600m
温度 / Temperatures: T ~80℃

✓ 适用范围 Application

引黄工程/大型水利项目 / 供水工程 / 灌溉 / 海水输送
其它各种输水场合

Yellow river diversion project , large water project
water supply , Irrigation , Seawater transportation
Other water transportation

✓ 材质标准 Material Standard

泵 体: 铸铁 / 球墨铸铁 / 不锈钢 / 双向不锈钢
主 轴: 不锈钢 / 合金钢
叶 轮: 铸铁 / 青铜 / 不锈钢 / 双相不锈钢

Pump Casing : Cast Iron / Ductile Cast Iron / Stainless Steel / Duplex Stainless Steel
Shaft : Stainless Steel / Alloy Steel
Impeller : Cast Iron / Bronze / Stainless Steel / Duplex Stainless Steel



Feature 特点

采用双进口中开蜗壳式结构，泵紧凑美观，更换转子部件不用移动电机及管路。可更换式泵体密封环，确保了泵体与叶轮间的间隙可控制在要求的公差内。法兰钻孔标准按ISO，DIN，BS或ANSI。

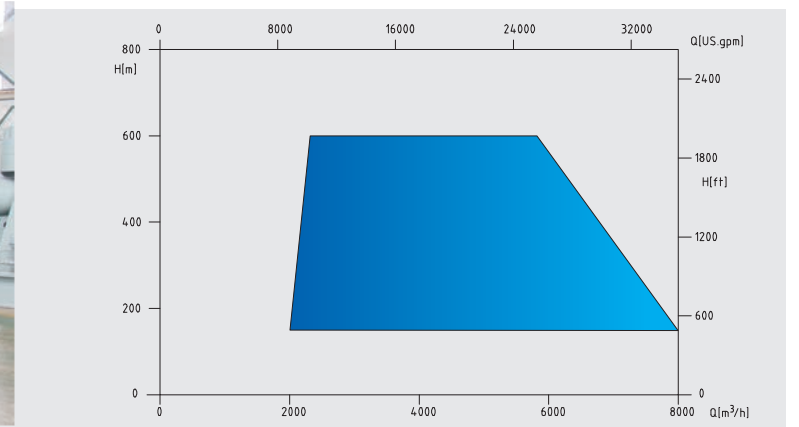
闭式两级三叶轮或三级五叶轮结构设计，平衡了轴向力，叶轮按ISO1940标准进行静平衡与动平衡。

卧式安装，填料或机械密封，脂润滑、油润滑或强制润滑轴承可供选择。

Double inlet and Split casing volute structure, Compact and beautiful, make it easier to change rotor assembly, without remove motor or pipeline. Changeable pump seal ring to promise the space between pump casing and impeller under the requested tolerance. Flange can be drilled according to ISO, DIN,BS and ANSI.

Closed two-stage three impeller or three-stage five impeller structure to balance axial force, and impeller is static & dynamic balanced according to ISO1940.

There are optional choice of vertical installation or horizontal installation, packing ring and mechanical seal, grease lubrication, oil lubrication and pressure lubrication.



TSJH, TGJH 径向剖分两端支承式离心泵

Radically Split Between Bearing Centrifugal Pump

BB2
API610

✓ 泵型 Model 执行标准 Executive Standard
API610 BB2 According to API 610 standard

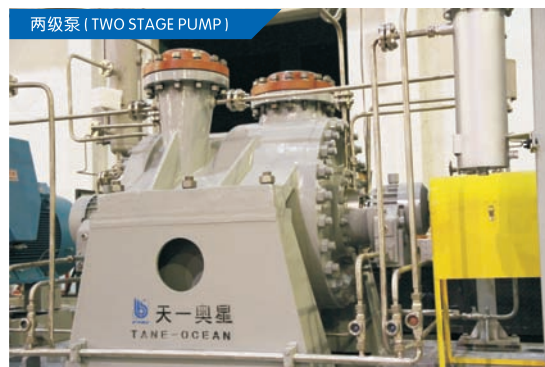
✓ 参数范围 Performance Range

流量 / Capacities:	Q	~5000 m ³ /h
扬程 / Heads:	H	~480m
温度 / Temperatures:	T	-80~+450℃
设计压力 / Design Pressure:	P	~10 MPa

✓ 适用范围 Applications

石油精炼 / 石油化工和化学工业
不含固体颗粒的石油、液化石油气和其他介质
特别适合于输送高温高压以及易燃易爆或有毒的液体

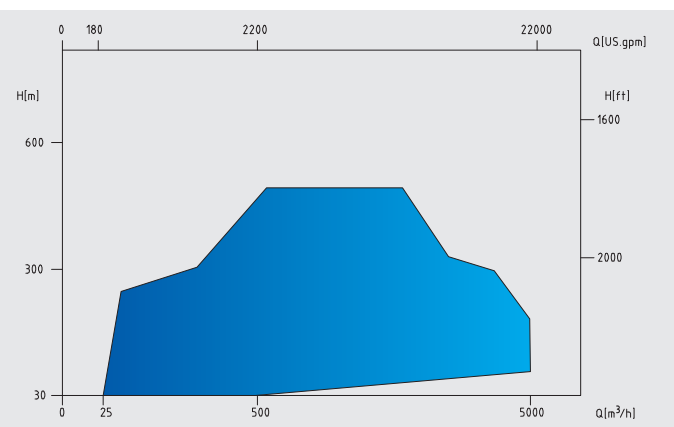
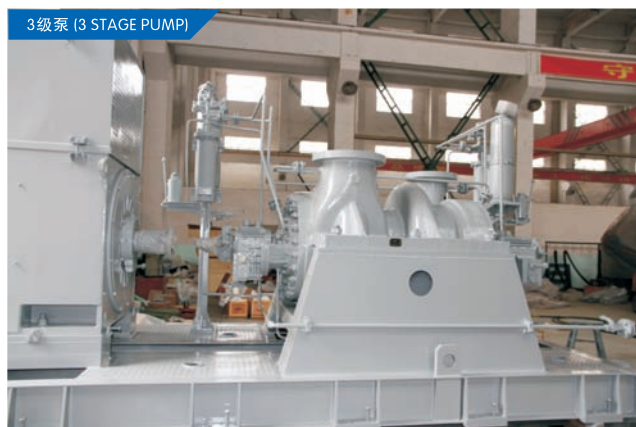
Oil refineries , Oil chemistry industry
Solid particles free oil,LPG and other chemical liquids
Particularly suitable for high temperature, high pressure, flammable, explosive and hazardous liquids



Feature 特点

该泵为卧式、径向剖分、单级或两级（特殊情况可采用三级或四级）、中心线安装、两端支承式结构。泵的吸入口法兰和吐出口法兰均在泵体上，且均垂直朝上。轴封腔和泵盖是铸成一体的，可装各种机械密封，轴封腔外面铸有可供选择的水冷腔夹套。

Horizontal, radically split, single stage or double stage (special condition three stage or four stage), centerline mounted, between bearing structure. The suction flange and discharge flange are equipped vertically up in the pump casing. Mechanical seal chamber and pump casing are casting together, suitable for all kinds of mechanical seal, and the optional water cooling chamber jacket are casted out of the mechanical seal chamber.



KDY 卧式中开多级离心泵

Horizontal Split Casing Multi-stage Centrifugal Pump

BB3
API610

✓ 泵型 Model 执行标准 Executive Standard
API610 BB3 (KDY) According to API 610 standard

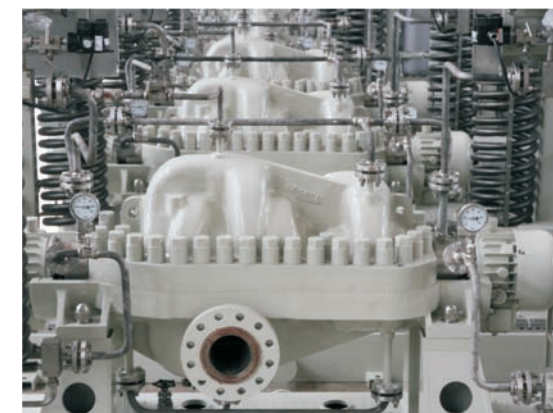
✓ 参数范围 Performance Range

流量 / Capacities:	Q	10~3000m ³ /h
扬程 / Heads:	H	~2500m
温度 / Temperatures:	T	~205℃
设计压力 / Design Pressure:	P	~30MPa
最高转速 / Max speed:	N	~5000rpm

✓ 适用范围 Application

油田和各种污水，污油，渣油输送 / 原油和成品油管输
供水管线 / 各种远程输水 / 高压注水 / 海水淡化工程

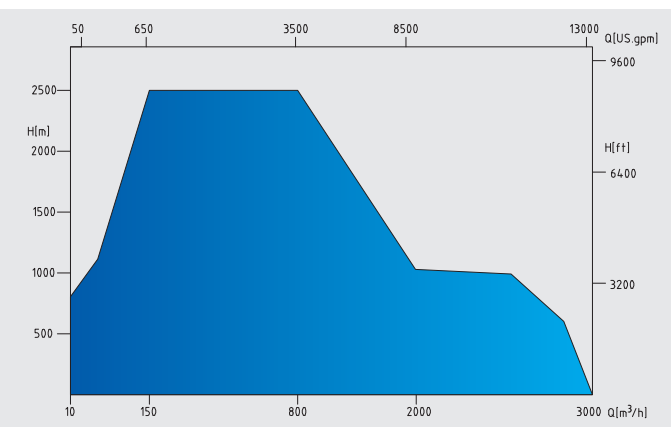
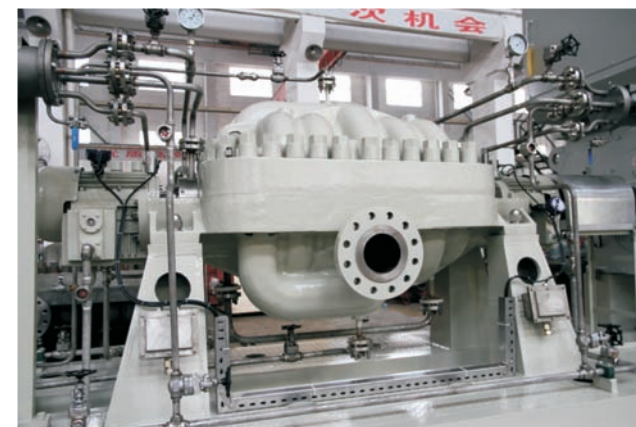
Oil filed and sewage water, dirty oil and residual oil transportation
Crude oil and production oil pipeline , Water supply
All kinds of long distance water transportation
High pressure water injection , Sea water desalinization



Feature 特点

KDY为三级或三级以上离心泵。叶轮采用背靠背安装以平衡轴向力，压水室采用双涡壳设计以平衡径向力。首级双吸叶轮设计更好的适用于低汽蚀场合的需要。泵带可更换的密封环，叶轮经过静、动平衡试验，产品设计符合最新API610标准。

KDY: Multi-stage(more than two stage)centrifugal pump Back to back impeller installation to balance the axially force, pressurized-water chamber adopts double volute design to balancethe radially force, double first suction stage for lower NPSHR requests KDY pumps are equipped with changeable wearings, impellers are static balance tested and dynamic balance tested.



TDY 节段式多级离心泵 Sectional Multi-Stage Centrifugal Pump

BB4
API610

✓ 泵型 Model 执行标准 Executive Standard
API610 BB4 According to API 610 standard

✓ 参数范围 Performance Range

流量 / Capacities: Q ~800 m³/h
扬程 / Heads: H ~1200m
温度 / Temperatures: T -80℃~180℃
设计压力 / Design Pressure: P ~15 MPa

✓ 适用范围 Applications

供水装置 / 热电厂 / 管线加压 / 制冷工程
Water supply devices, Heat power plant
Pipeline pressure, refrigerating engineering

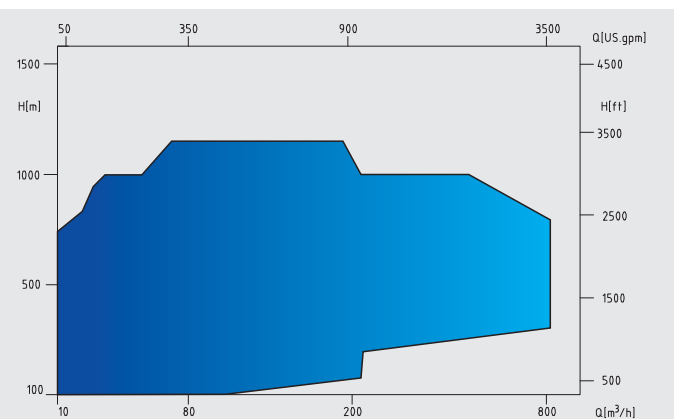


Feature 特点

TDY型卧式多级泵各规格的零部件都设计成通用的标准尺寸，中段间用O型密封圈密封并在中段的外部用螺栓将它们联接在一起。如有特殊要求可用金属复合波齿垫片代替O型圈。入口段和出口段通常采用脚支承。当输送液体温度 $T > 150^{\circ}\text{C}$ 时采用中心线支承。每种规格有两套叶轮/导叶（水力模型），泵高效区宽，可更换的口环在叶轮与壳体间起到密封作用，大部分轴向力由水力平衡装置来平衡，残余轴向力由推力轴承来承受，轴承润滑采用脂润滑或稀油润滑。

All spare parts are designed into standard size, the middle section is sealed by O ring and connected by bolts outside of the middle section. Metal composite wave tooth gasket can be used in special occasion. The suction section and discharge section is generally foot mounted, and centerline mounted when the liquid's temperature more than 150°C .

Each type have two sets of impeller/guide vane, and the TDY pump have a wide high-efficiency zone. Changeable wear ring to seal between pump casing and impeller. Most axial forces is balanced by hydraulic balanced devices and other are balanced by thrust bearing. Grease lubrication or oil lubrication.



TDC 卧式双壳体多级筒型泵 Horizontal Double Casing Barrel Centrifugal Pump

BB5
API610

✓ 泵型 Model 执行标准 Executive Standard
API610 BB5 According to API 610 standard

✓ 参数范围 Performance Range

口径 / Size: DN 40~250mm
流量 / Capacities: Q ~1000m³/h
扬程 / Heads: H ~3200m
温度 / Temperatures: T -80℃~+450℃
设计压力 / Design Pressures: P ~35MPa
最高转速 / Max speed: N ~6000rpm

✓ 适用范围 Application

输送清洁的或稍有污染的、低温的或者高温的、化学中性或有腐蚀性的液体
炼油厂 / 化工厂 / 煤化工工程 / 制冷工程 / 电厂 / 海洋工程

Suitable for various liquids include clean or dirty, low temperature or high temperature, neutral or corrosive.
Refinery, Chemical Plant, Coal Mining, refrigerating engineering, Power Plant, Offshore engineering



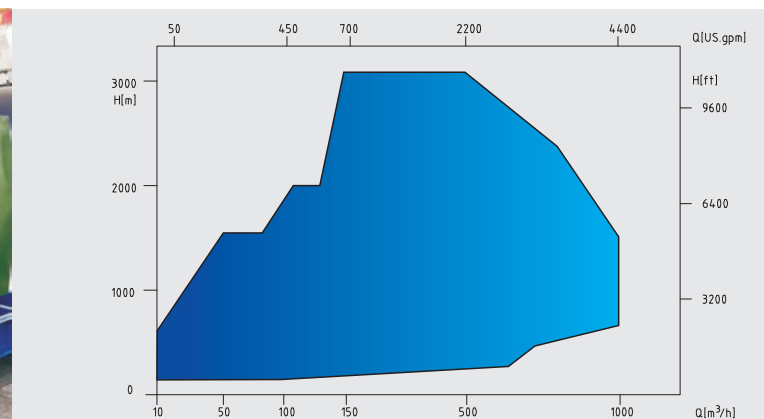
Feature 特点

泵结构为双壳、径向剖分、两端支承式多级离心泵，内置芯包采用轴向剖分BB3芯包，具有以下特点：

- 转子动平衡合格后不解体，直接装入外筒体内，动平衡精度和零件同心度无变化。
- 叶轮为背对背布置，取消了平衡装置。
- 双蜗壳平衡径向力。小流量用导叶式结构平衡径向力。
- 内泵的温度场分布更趋于均匀、对称，提高了芯包在高温状态下的整体刚性。

TDC pumps are double casing, radically split casing, between bearing multi-stage centrifugal pump, the internal parts are BB3 structures which is axially split, which have following features.

- The Rotors are need not to disassemble after successful dynamic balancing, and rotor will installed in the external casing directly, dynamic balancing accuracy and concentricity will not changed.
- Back to back arranged impeller to balance axial force, extra balance devices is canceled.
- Double volute to balance radical force, for small capacity, diffuser type structure to balance the radical force.
- Internal parts temperature field are more homogeneity and symmetry, to improve the internal parts overall rigidity under high temperature.



TCZ 标准化工泵
Standard Chemical Pump

✓ 泵型 Model 执行标准 Executive Standard
标准化工泵 According to ISO5199/GB5656 standard

✓ 参数范围 Performance Range

口径 / Size:	DN	32~300 mm
流量 / Capacities:	Q	~2000 m³/h
扬程 / Heads:	H	~160m
温度 / Temperatures:	T	-30~+150℃
设计压力 / Design Pressures:	P	~2.5MPa

✓ 适用范围 Applications

输送低温或高温液体；中性或有腐蚀性液体；清洁或内含有固体颗粒的液体。
化学和石油化工行业 / 炼油厂 / 纸厂和纸浆业 / 制糖厂 / 热电厂

Suitable for various liquids include clean or dirty, low temperature or high temperature, neutral or corrosive.
Chemical and oil industry , Refinery , Water and pulp
Sugar Plant , Thermo power plant



Feature 特点

该泵为单级、卧式、径向剖分式蜗壳泵。泵体底脚支撑，单级径向叶轮。轴承架、轴、填料箱体和叶轮组成一个安装单元模块。不同规格之间可以完全互换，节省备件储备成本，同时，拆下可分式联轴器后，无需拆卸管路和电机，就可把轴承架、轴、填料箱体和叶轮组成的单元模块拆卸下来。轴封采用填料密封或机械密封，并配有冷却、冲洗或密封液系统。

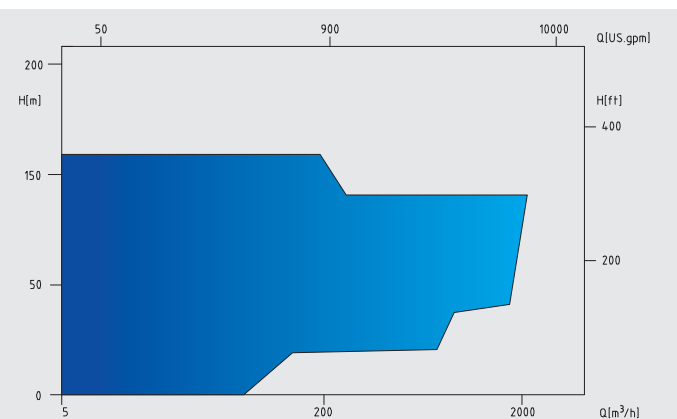
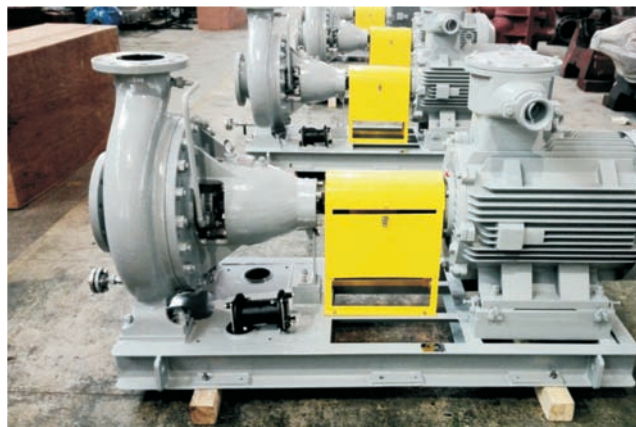
从电机端看，泵为顺时针方向转动。

The TCZ pumps are single stage, horizontal, radically split volute pump. The Casing is foot supported and equipped with single radically impeller. Bearing bracket, shaft, seal box and impeller form a installation unit, and it's changeable between the same size to save costs of spare parts reserve. At the meantime, after remove the split coupling, this unit can be removed without disassemble the pipeline and motor.

Shaft seal adopts API682 Standard mechanical seal and flushing plan. Standard piping design in accordance with API standard.

Which can cooling the centerline supporting pump

Pumps rotation is clockwise viewed from motor end.

TCA 石油化工流程泵
Petro Chemical Processing PumpOH1
API610

✓ 泵型 Model 执行标准 Executive Standard
API610 OH1 According to API 610 standard

✓ 参数范围 Performance Range

口径 / Size:	DN	25~400 mm
流量 / Capacities:	Q	~2600 m³/h
扬程 / Heads:	H	~250m
温度 / Temperatures:	T	-80~+300℃
设计压力 / Design Pressures:	P	~2.5MPa

✓ 适用范围 Applications

炼油厂 / 石油化工厂 / 普通工业流程
煤化工和低温工程 / 供水及水处理
海水淡化 / 管线加压

Refineries , Chemical processing , general industry
Coal mining , Water supply system and water processing
Sea water desalinization , Pipe line pressure increasing



Feature 特点

该泵为单级、卧式、径向剖分式蜗壳泵。泵体采用底脚支撑，单级径向叶轮；轴向吸入，径向排出。轴封采用填料密封，也采用可单端面或双端面集装式机械；并配有冷却，冲洗或密封液系统。

标准管路按API规范设计。

吸入和排出法兰的额定压力等级相同。

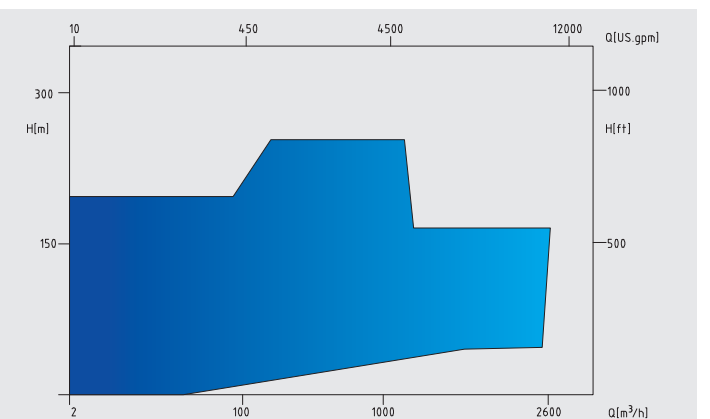
从电机端看，泵为顺时针转动。

The TCA pumps are single stage, horizontal, radically split volute pump. The Casing is foot supporting and equipped with single radically impeller. Axially inlet and radically outlet.

The pump adopt wear ring and balancing hole to realize the hydraulic balance, Shaft seal adopts API682 Standard mechanical seal and flushing plan. Standard piping design in accordance with API standard.

The suction flange rating pressure grade is the equal to discharge flange

Pumps rotation is clockwise viewed from motor end.



TLF 小流量化工流程泵
Small capacity Chemical Processing PumpOH2
API610

✓ 泵型 Model 执行标准 Executive Standard
API610 OH2 According to API 610 standard

✓ 参数范围 Performance Range

口径 / Size:	DN	15~50mm
流量 / Capacities:	Q	0.3~15 m³/h
扬程 / Heads:	H	4.5~160m
温度 / Temperatures:	T	-80℃ ~ +450℃
设计压力 / Pressures:	P	~5.0Mpa

✓ 适用范围 Application

石油化工 / 炼油厂
化学工业 / 造纸、纺织
有机化工 / 轻工、食品、医药

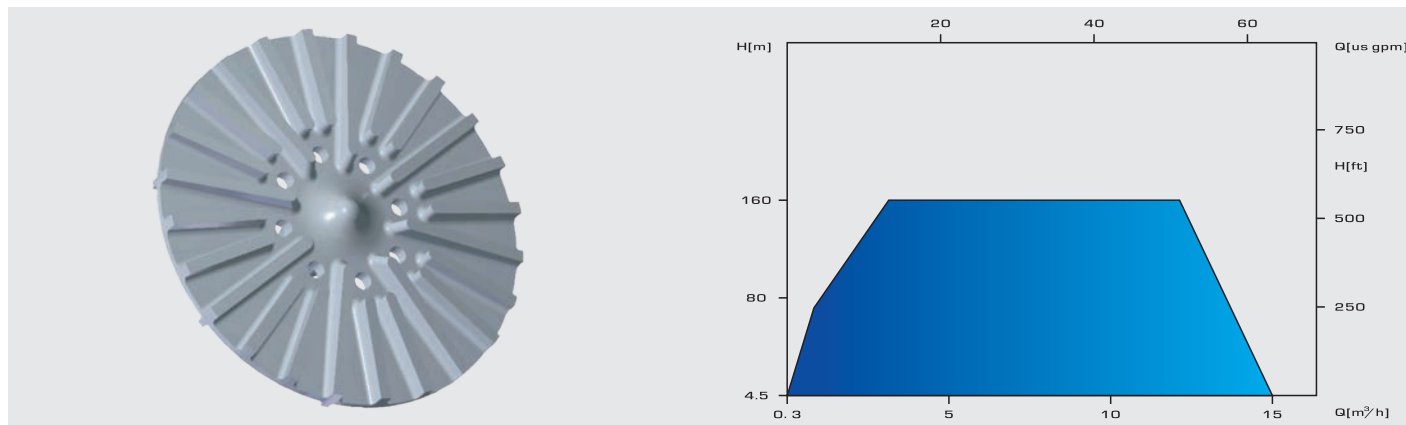
Petrochemical engineering, Refinery ,
Chemical engineers, paper industry
organic chemical industry, Light Industry, Food, pharmacy industry



Feature 特点

该泵为单级、卧式、径向剖分式泵；
泵体采用中心支撑，内部流道为环形流道，中间顶出口，泵体与叶轮之间增加导叶，导叶通过螺栓固定在泵盖上；
叶轮采用前半开式叶轮，带背叶片和平衡孔平衡轴向力；叶片采用直叶片，长短叶片交错布置；叶轮与轴用螺纹连接，不设叶轮螺母。
密封系统可以根据工况要求配置填料密封、单端面、双端面、串联机械密封。

This pump is single stage, horizontal type ,radically split volute type
Centerline installation , Inner flow passage is circle type, discharge located in the middle top ,diffuser Structure is located between casing and impeller, diffuser is fixed on the pump cover by bolts
Impeller is front semi-open type ,which have rear vane and balance hole to balance the axial forces, the vane, which is straight shape, are arranged intervened , Thread is used for connecting impeller and shaft, and impeller nut is not needed
Several seal system can be used, according to the work condition ,like gland packing ,single seal, double seal or tandem seal

TCE, TCF 石油化工流程泵
Petro Chemical Processing PumpOH2
API610

✓ 泵型 Model 执行标准 Executive Standard
API610 OH2 According to API 610 standard

✓ 参数范围 Performance Range

口径 / Size:	DN	25~400 mm
流量 / Capacities:	Q	~2600 m³/h
扬程 / Heads:	H	~300m
温度 / Temperatures:	T	-80℃ ~ +450℃
设计压力 / Design Pressures:	P	~5.0Mpa (TCE) / ~7.5Mpa (TCF)

✓ 适用范围 Application

炼油厂 / 煤化工 / 石油化工
造纸 / 海水输送 / 空调
海上油田 / 糖厂

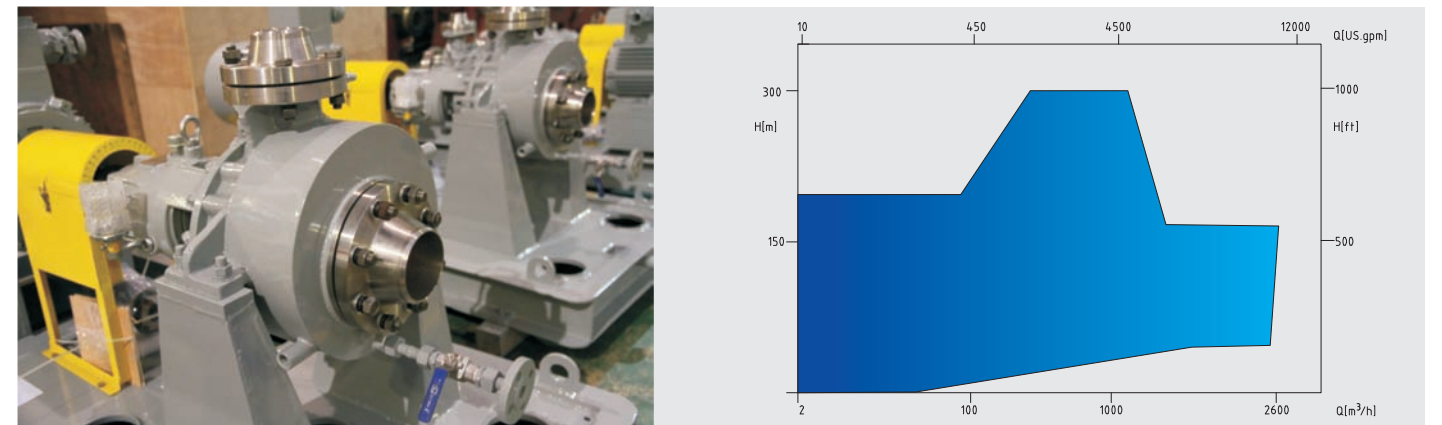
Refinery , Coal Mining , Petrochemical
Paper industry , Sea water transportation
Air conditioner , Offshore oil field , Sugar Plants



Feature 特点

该泵为单级、卧式、径向剖分式蜗壳泵。泵体带有中心支撑，单级径向叶轮。轴向吸入，径向排出。轴封采用填料密封，也采用可单端面或双端面集装式机械。并配有冷却，冲洗或密封液系统。
标准管路按API规范设计。可对中心支撑的泵进行冷却。
吸入和排出法兰的额定压力等级相同。
从电机端看，泵为顺时针转动。

The TCE, TCF pumps are single stage, horizontal, radically split volute pump. The Casing is centerline supporting and equipped with single radically impeller. Axially inlet and radically outlet.
The pump adopt wear ring and balancing hole to realize the hydraulic balance, Shaft seal adopts API682 Standard mechanical seal and flushing plan.
Standard piping design in accordance with API standard.which can cooling the centerline supporting pump
The suction flange rating pressure grade is the equal to discharge flange
Pumps rotation is clockwise viewed from motor end.



TGDS 立式管线泵
Vertical In line PumpOH3
API610

泵型 Model 执行标准 Executive Standard
API610 OH3 According to API 610 standard

参数范围 Performance Range

流量 / Capacities: Q ~2600m³/h
扬程 / Heads: H ~300m
温度 / Temperatures: T -40~+250℃
设计压力 / Design Pressures: P ~5.0 MPa

适用范围 Applications

炼油厂 / 石油化工 / 普通工业流程
煤化工和低温工程 / 供水及水处理
海水淡化 / 管线加压

Refineries , Chemical processing , general industry
Coal mining , Water supply system and water processing
Sea water desalinization , Pipe line pressure increasing



Feature 特点

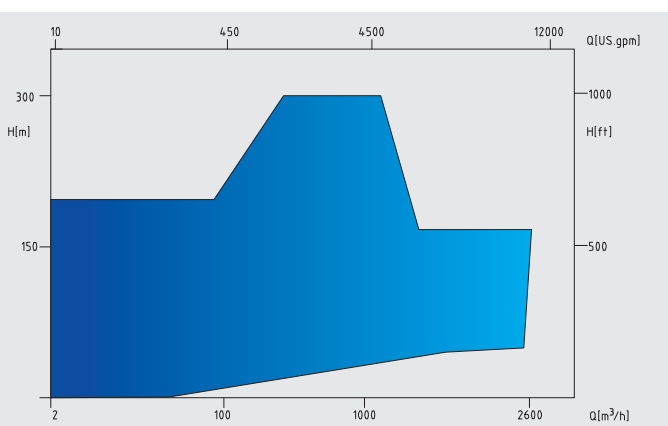
本系列泵为单级单吸径向剖分的立式管线离心泵，该泵的设计制造符合API610标准和GB3215标准要求。泵结构符合API610 OH3泵型；OH3型立式管道泵为带有独立轴承架的立式管道单级悬臂式泵；本系列泵轴向力通过叶轮的前后耐磨环及平衡孔来平衡，残余轴向力由轴承箱中止推轴承来承受；轴承采用脂润滑；电机安装在与泵成一体的支架上；泵与驱动机采用带加长节挠性联轴器连接。本系列泵的转向从电机端向下看为顺时针方向，OH3系列泵的吐出和吸入口的中心线在同一水平线上，占地面积小，安装方便。

TGDS series pump is single stage, single suction, radically split vertical inline pump, which is designed and manufactured according to API 610 and GB 3215 standard, and pump structure is according to API 610 OH3.

OH3 vertical inline pump is equipped with independent bearing bracket, and pump axially force is balanced by impeller' s wear ring and balance orifice, and other force is balanced by thrust bearing in the bearing box.

TGDS pump is grease lubricated, and motor is installed together with pump plate, and connected with pump by flexible coupling.

Clock wised viewed from motor to pump, and the centerline of suction and discharge are in the same level. Easy to install and takes limited floor area.

TGY, TGYU 立式便拆式管道泵
Vertical detachable type In line PumpOH4
API610

泵型 Model 执行标准 Executive Standard
API610 OH4 According to API 610 standard

参数范围 Performance Range

口径 / Size: DN 40~500mm
流量 / Capacities: Q ~2000m³/h
扬程 / Heads: H ~200m
温度 / Temperatures: T -35~+105℃
设计压力 / Design Pressures: P ~2.5MPa

适用范围 Application

冷却水 / 供水工程 / 消防工程
污水处理 / 水灌溉 / 石化工程
管路增压 / 工业供排水

Industrial water supply system , Fire fighting , Water supply
Pipeline pressure increasing , Cooling water , Irrigation
Petrochemical project , Sewage water processing



Feature 特点

本系列泵为单级、单吸、径向剖分的立式管线离心泵，泵的设计和制造符合GB/T3215等国家及行业标准，也符合美国石油学会API610标准规定。泵结构符合API610 OH4泵型。

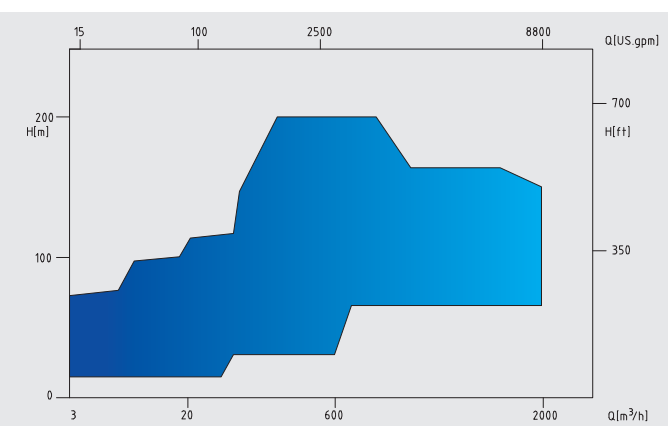
TGY系列立式管道泵（OH4）为刚性联轴器传动的立式管道单级悬臂式泵。此泵联轴器采用便拆式联轴器。本系列泵轴向力通过叶轮的前后耐磨环及平衡孔来平衡，残余轴向力由电机止推轴承来承受。

本系列泵的转向从电机端向下看为顺时针方向。TGY系列泵的吐出和吸入口的中心线在同一水平线上。TGYU泵进出口位于泵体同一侧，泵体呈U字型。此系列泵占地面积小，安装方便。

TGY and TGYU series pump is single stage, single suction, radically split vertical inline pump, which is designed and manufactured according to API 610 and GB 3215 standard, and pump structure is according to API 610 OH4.

OH4 vertical inline pump is equipped with rigidly coupling and pump axially force is balanced by impeller' s wear ring and balance orifice, and other force is balanced by thrust bearing in the bearing box.

Clock wised viewed from motor to pump. TGY pump' s centerline of suction and discharge are in the same level. TGYU pump' s suction and discharge are in the same side, and the pump is in U shape. Easy to install and takes limited floor area.



TVC 立式长轴泵
Vertical Turbine PumpVS1
API610

✓ 泵型 Model 执行标准 Executive Standard
API610 VS1 According to API 610 standard

✓ 参数范围 Performance Range

泵出口直径: DN 100~800 mm
流量: Q 15~6500 m³/h
扬程: H 10~300 m
工作压力: P 可达 ~5.0MPa
工作温度: T -40~+150 °C



适用于炼油厂、石油化工、钢厂、电厂、自来水、海水淡化、海水提升等行业和领域。

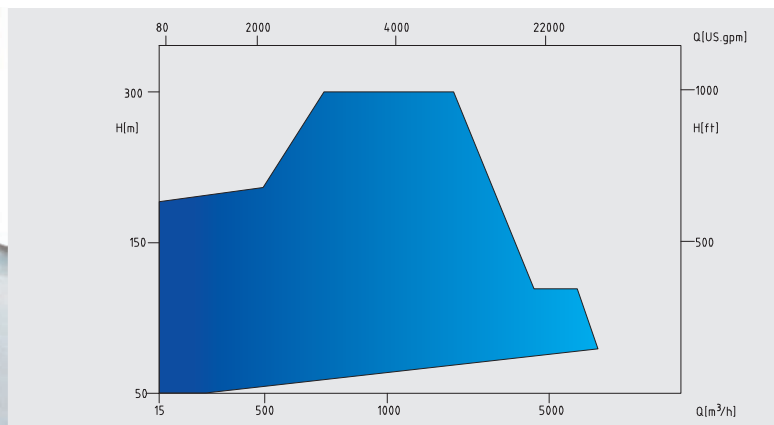
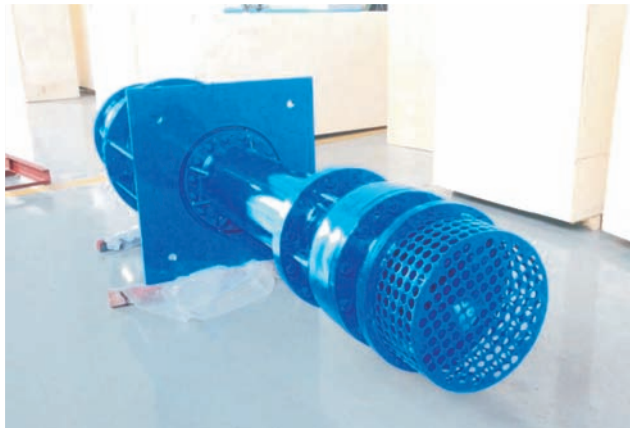
Applicable for Refinery, Petrochemical engineering, Steel plant, Power plant, water supply, sea water desalination and sea water lift.



Feature 特点

- 1、立式长轴泵入口垂直向下，出口水平，单基础安装，泵和电机直联；
- 2、叶轮采用平衡孔平衡轴向力，叶轮前后盖板均设有可更换的密封环，保护叶轮及泵体。
- 3、泵的残余轴向力和转子部件的重量由泵专用推力轴承部件承受。
- 4、泵的轴封可为填料密封，机械密封。
- 5、叶轮的轴向位置由轴承部件上端或泵联轴器内的调整螺母来调整，十分方便。
- 6、中间轴联接采用套筒联轴技术；水泵导轴承采用加强型填充聚四氟乙烯或赛龙轴承，输送污水时，导轴承须外接冷却润滑水。

- 1-Vertical turbine pump's suction is straight downward, horizontal discharge, single base installation, pump and motor directed coupled
- 2-Impeller use balance hole to balance axial force, impeller front and rear shroud are equipped with changeable wear ring, to protect impeller and casing
- 3-Pump's residual axial force and rotor weight are balanced by pump thrust bearing part
- 4-Pump shaft seal can use gland packing or mechanical seal
- 5-Pump's axial position are adjust by bearing assembly upper part or pump coupling, which is very convenient
- 6-Middle shaft use sleeve coupling technology, Pump guide bearing use reinforced PTFE or Thordan bearing, for sewage water application, external lubrication water shall be consider in guide bearing.

TTVC 立式筒袋泵
Vertical Barrel PumpVS6
API610

✓ 泵型 Model 执行标准 Executive Standard
API610VS6 (TTVC) According To API 610 Standard

✓ 参数范围 Performance Range

口径 / Size: DN 40~200 mm
流量 / Capacities: Q ~800 m³/h
扬程 / Heads: H ~800m
温度 / Temperatures: T -180~+180°C
设计压力 / Design Pressures: P ~10MPa

✓ 适用范围 Applications

输送清洁的或稍有污染的低温的或者高温的化学中性或有腐蚀性的液体精炼厂
精炼厂 / 石油化工厂 / 发电厂 / 低温工程
管线加压 / 海上采油平台 / 液化气工程
Suitable for various liquids include clean or dirty, low temperature or high temperature, neutral or corrosive.
Low temperature engineering, Power plant
Pipeline pressure increasing, Petrochemical
Offshore oilfields, LPG engineering, Refinery



Feature 特点

TTVC系列立式筒袋泵为多级、径向剖分式，并配有外壳。首级叶轮一般为吸入式叶轮。轴向力由向心推力球轴承承受。压差较大的情况下，由平衡鼓装置平衡轴向力。外壳仅承受入口压力，外壳的长度以及泵的安装深度取决于对NPSH汽蚀性能的要求。

泵若安装在容器上或于管道法兰连接，可不装外壳。

轴承润滑采用稀油润滑，带有独立的内循环自动润滑系统。流体动力径向滑动轴承位于泵的入口端。泵在一定安装深度情况下，泵轴带有中间支承，其支承用液体润滑。轴封采用的形式有：单端面机械密封，串联式机械密封。并带有冷却、冲洗或密封液系统。

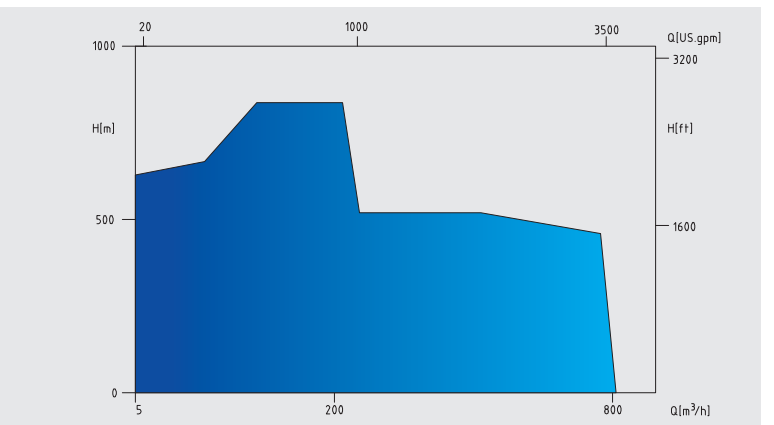
吸入管和排出的位置在安装法兰的上部，互成180度，其它的布局方式也是可以的。

电动机通过挠性联轴器驱动泵运转。从驱动端方向看，泵逆时针旋转。

TTVC series vertical barrel pump is multistage, radically split and with outer casing. First stage impeller is generally suction impeller, the axially forces is balanced by thrust ball bearing. Balancing drum structure can be optional choices when the differential pressure is large. The outer casing only bearing the suction pressure, the length of outer casing and the pump installation depth is depends on NPSHr performance requests.

If the pump is installed on the tank or pipeline, the outer casing is not necessary

Thin oil lubricated, and with independent internal recycle automatic lubrication system. Hydraulic dynamic bearing is in the suction end of the pump. Suction and discharge is above the installation flange.



TY 立式液下泵
Vertical submerged pump**VS4**
API610

✓ 泵型 Model 执行标准 Executive Standard
API610 VS4 According to API 610 standard

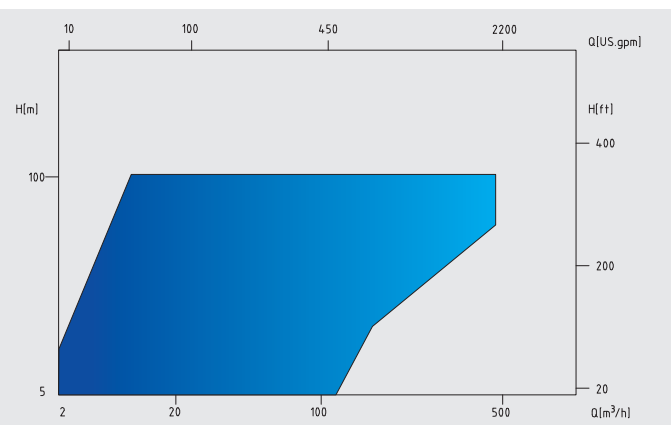
✓ 参数范围 Performance Range
流量 / Capacities: Q ~500 m³/h
扬程 / Heads: H ~100m
温度 / Temperatures: T -20℃~120℃
设计压力 / Design Pressure: P ~2.5 MPa

✓ 适用范围 Application
电厂 / 化工厂 / 污水厂 / 钢厂 / 造纸厂
Power plant , Chemical plant , Sewage plant
Iron industry , Paper industry

**Feature** 特点

接轴结构安全可靠，转子部件可以轴向调整，转子部件采用多点支撑,运行可靠，滑动轴承采用外冲洗润滑，80mm口径以上的泵采用双蜗壳，平衡了径向力。

Shaft is reliable,Rotor assembly is adjustable in the axially direction,Rotor assembly is multi-supported, and running reliable.Slide bearing is out lubricated,Double volute is used when the diameter is more than 80mm to balance the radically force.

**TS,S,SA,SAP** 单级双吸中开离心泵
Single Stage Double Suction horizontal Split Casing Centrifugal Pump

✓ 参数范围 Performance Range
流量 / Capacities: Q ~20000 m³/h
扬程 / Heads: H ~280m
温度 / Temperatures: T ~205℃

✓ 适用范围 Applications
冷却水项目 / 供水项目 / 消防工程
灌溉 / 工业供排水系统
海水输送 / 其它各种输水场合
Water cooling , Water supply , Fire fighting
Irrigation , Industrial water system
Sea water transportation , Other water transportation

✓ 材质标准 Material Standard
泵 体: 铸铁 / 球墨铸铁 / 铸钢 / 不锈钢及双相不锈钢
主 轴: 碳钢 / 铬钢 / 不锈钢
叶 轮: 铸铁 / 青铜 / 双相不锈钢 / 不锈钢
密封环: 铸铁 / 铜 / 不锈钢
Pump Casing : Cast Iron , Ductile Iron , Carbon Steel , Stainless Steel , Duplex Stainless Steel
Shaft : Carbon Steel , Chr Steel , Stainless Steel
Impeller : Cast Iron , Bronze , Stainless Steel , Duplex Stainless Steel
Wear Ring : Cast Iron , Bronze , Stainless Steel

**Feature** 特点

采用中开蜗壳式结构，更换转子部件不用移动电机及管路。可更换式泵体密封环，确保了泵体与叶轮间的间隙可控制在要求的公差内。法兰钻孔标准按ISO，DIN，BS或ANSI。

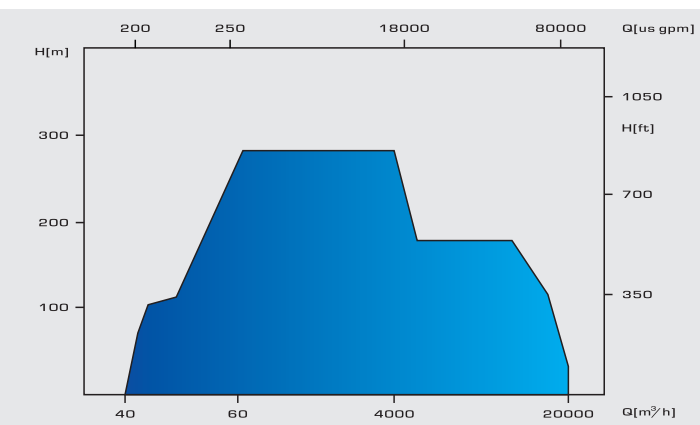
闭式双吸叶轮结构设计，平衡了轴向力，叶轮按ISO1940标准进行静平衡与动平衡。

立式或卧式安装，填料或机械密封，脂润滑或油润滑轴承可供选择。

Split casing volute structure to make it easier to change rotor assembly, without remove motor or pipeline. Changeable pump seal ring to promise the space between pump casing and impeller under the requested tolerance. Flange can be drilled according to ISO, DIN,BS and ANSI.

Closed double suction impeller structure to balance axial force, and impeller is static & dynamic balanced according to ISO1940.

There are optional choice of vertical installation or horizontal installation, packing ring and mechanical seal, grease lubrication and oil lubrication



D, DG 节段式多级离心泵 Sectional Multistage Centrifugal Pump

✓ 参数范围 Performance Range

流量 / Capacities: Q ~800 m³/h
扬程 / Heads: H ~600m
温度 / Temperatures: T ~120℃

✓ 适用范围 Applications

水厂 / 喷灌 / 消防 / 高压输水
工业供排水系统 / 矿山
锅炉给水 / 海水输送

Industrial water system, Water plant, Mining, Irrigation
Fire fighting, High pressure water transportation
Sea water transportation, Boil water supply

✓ 材质标准 Material Standard

泵 体: 铸铁 / 球墨铸铁 / 铸钢 / 不锈钢及双相不锈钢
主 轴: 碳钢 / 铬钢 / 不锈钢
叶 轮: 铸铁 / 青铜 / 双相不锈钢 / 不锈钢
密封环: 铸铁 / 铜 / 不锈钢

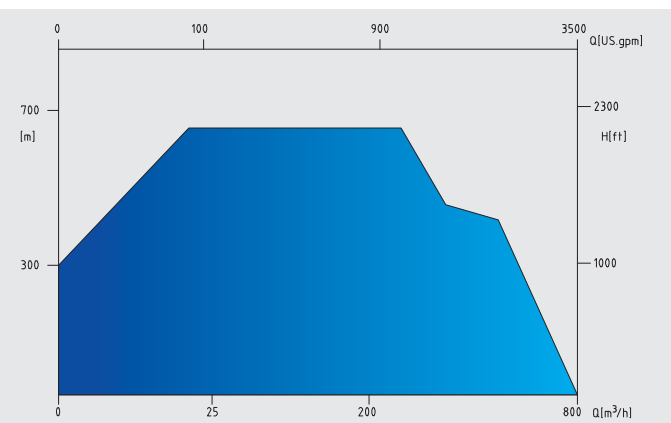
Pump Casing: Cast Iron, Ductile Iron, Carbon Steel, Stainless Steel, Duplex Stainless Steel
Shaft: Carbon Steel, Chr Steel, Stainless Steel
Impeller: Cast Iron, Bronze, Stainless Steel, Duplex Stainless Steel
Wear Ring: Cast Iron, Bronze, Stainless Steel



Feature 特点

脂润滑标准轴承。可采用机械密封或填料密封。D 型泵输送温度低于80℃的液体，DG型泵输送温度超过80℃的液体。

Standard grease lubrication bearing, adopts mechanical seal or packing. D pumps transport liquids with a temperature lower than 80 °C and DG transport higher than 80 °C



TTV 立式透平泵 Vertical Turbine Pump

✓ 参数范围 Performance Range

流量 / Capacities: Q ~40000 m³/h
扬程 / Heads: H ~200m
温度 / Temperatures: T ~80℃

✓ 适用范围 Application

供水工程 / 深井灌溉 / 矿井除水 / 喷灌工程
工业矿山 / 河流/海水循环 / 消防工程 / 石化工程
Water Supply, Deep well irrigation, Mining well dewater
Sprinkler irrigation engineering, Industrial mining
River/Seawater circulate, Firefighting engineering
Petrochemical engineering

✓ 材质标准 Material Standard

泵 体: 铸铁 / 球墨铸铁 / 青铜 / 不锈钢 / 双向不锈钢
主 轴: 不锈钢
叶 轮: 铸铁 / 青铜 / 不锈钢 / 双相不锈钢
出水弯头: 铸铁 / 碳钢

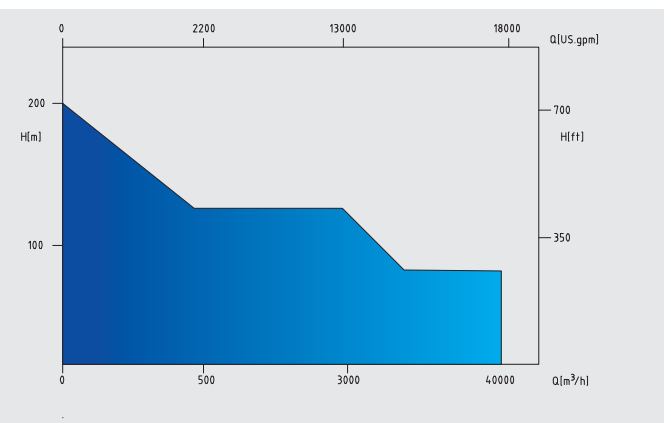
Pump Casing: Cast Iron / Stainless Steel / Ductile Cast Iron / Bronze / Stainless Steel
Shaft: Stainless Steel
Impeller: Cast Iron / Bronze / Stainless Steel / Duplex Stainless Steel
Discharge Head: Cast Iron or Cast Steel



Feature 特点

立式单级或多级泵采用混流或轴流式叶轮设计，宽阔的水力覆盖范围为客户提供了更好的选择。出水弯头材质可采用焊接结构或铸铁，层上层下结构设计，优质的导轴承结构提高了轴和轴承的寿命。可由电机或柴油机经齿轮箱驱动。

Vertical single stage or multistage pump, adopts mix-flow or axial flow impeller designation. Wide hydraulic area to make better choices for customers. The discharge head can be welding or casting, above sole plate or under sole plate. Using excellent guide bearing to lengthen the working time of shaft and bearing.



XB 各种离心式消防泵 Centrifugal Firefighting pump

✓ 执行标准 Executive Standard
According To NFPA20、GB6245 Standard

✓ 参数范围 Performance Range
流量 / Capacities: Q 25~3000 m³/h
扬程 / Heads: H 30~600m
温度 / Temperatures: T -45~+80℃

✓ 可用泵型 Applicable Model
中开卧式消防泵
Horizontal split casing firefighting pump
立式不锈钢多级消防泵
Vertical multistage stainless firefighting pump
卧式单级端吸式消防泵
Horizontal single stage end suction firefighting pump
立式透平式消防泵
Vertical Turbine firefighting pump
自动控制系统
Automatic control system

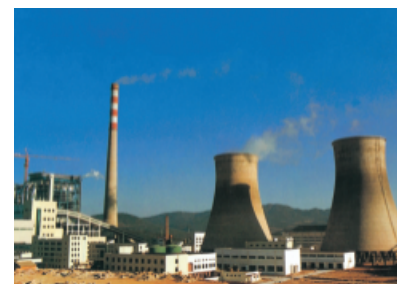


Feature 特点

1. 根据消防泵标准选用高等级耐腐蚀材料，产品运行稳定、可靠。
Selecting high level corrosion resisting material, Running stably and reliably
2. 性能曲线平稳，加大流量时候扬程不会骤降。
Steady performance curve, the differential head won't reduce tremendously when increase the capacity
3. 采用 PLC 控制的控制柜实现机组的全天候值守，安全性好。
Optional PLC controlled auto-control cabinet, to control the pump set 24 hours per day, better safety can be guaranteed.
4. 可选用电动机或柴油机作为驱动机，泵转速涵盖了电机和柴油机常见转速，满足客户的各种要求。
Motor drive or engine drive, the rotor speed covered motor and engine ordinary speed, to meet the requirements in different occasions.



业务范围 Service Range



主要业务——
泵及其配套产品的
设计、生产、销售及
服务

服务领域：Service for

原油及成品油输送
Crude Oil Pipeline

码头、机场、油库
Seaport, Airport, Oil tank

炼油、乙烯、化工
Refinery, Ethylene, Chemical

钢厂及电厂
Power and Steel Plants

海上平台服务
Offshore Service

消防工程
Fire-fighting System

城市给排水
City Water Supply

工业水处理
Industry Service

海水淡化
Sea Water

农业排灌
Irrigation

锅炉给水
Boiler Feed

其它
Others



原油及成品油管线输送

Crude Oil、Product Oil Pipeline

公司是中国最专业的原油及成品油泵生产厂家，产品占据国内市场主要份额，大量替代进口产品；中石化，中石油及中海油的主要供货商。产品具备强大竞争力，并批量进入国际石化领域。

Tane Ocean is the leader of designing, engineering and constructing oil pump's supplier in China. Most of the pipeline oil pumps in China was supplied by Seoca. And the pumps are exported to more and more different countries for oil industry now.

其它 Others:

克拉马依油田输油公司克乌管线改造
长庆油田靖咸线、靖惠线、靖榆线
中石油管道物质装备总公司石兰、惠银原油管线
中石化管道储运公司临濮线、沧津线、东临复线
中石化管道储运公司仪征—南京穿江输油线
中石化管道储运公司仪征—长岭原油管道工程
中石化销售实业有限公司武汉穿江成品油管线
中石油兰郑长成品油输送管线项目
中石化荆门—荆州成品油管线
中石化销售公司长株成品油管线
中石化销售公司环北京成品油管线
中石化广西1000万吨成品油外输管道工程
中海油东莞立沙油品仓储惠州—东莞成品油管道项目

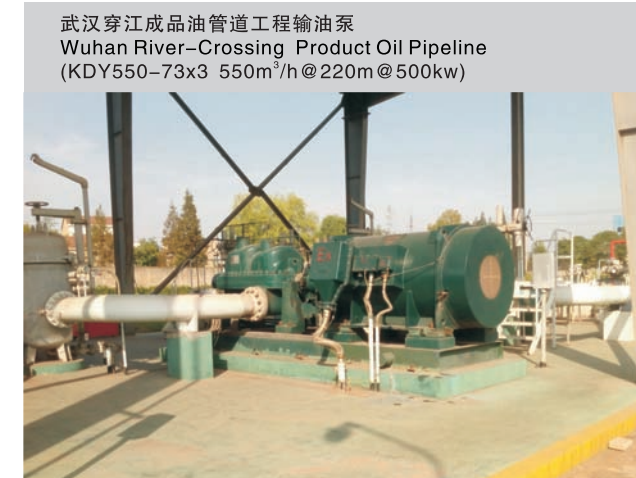


董潍管线
Dongwei Line
(TSY400–350–435 2300m³/h @ 210m @ 1600KW)



长庆输油公司惠安堡输油站
Huianpu Oil Pumping Station Changqing
(KDY700–90x5 700m³/h @ 450m @ 1250kw)

CIU pipeline reconstruction Kelamayi oil field oil company
Changqing Oilfield Jing Xian line, Jing Hui, Jing Yu line line
Sinopec pipeline Co.,Ltd, PetroChina Pipeline material and Equipment
Corpration, Shilan, Huiyin Crude Oil Pipeline
Sinopec pipeline storage and transportation co. LinPu line, lingqin line, east line
Sinopec Nanjing – Yizheng river oil line
Sinopec Yizheng – Changling oil pipeline
Sinopec Sales Industry Co.,Ltd, Wuhan river–crossing product oil pipeline
PetroChina Lanzhou–zhengzhou–changsha product oil Pipeline
Sinopec jingmen–jingzhou product oil line
Sinopec sales company changling–zhuzhou Product oil pipeline
Sinopec sales company Ring Beijing product oil pipeline
Sinopec 10 million tons of refined oil transmission pipeline engineering in guangxi
Cnooc dongguan sand oil stock huizhou–dongguan products pipeline project



武汉穿江成品油管道工程输油泵
Wuhan River–Crossing Product Oil Pipeline
(KDY550–73x3 550m³/h @ 220m @ 500kw)



1992年克拉玛依油田（填补国内空白）
Karamay oil field in 1992 (fill the domestic blank)
(KDY400–100x6 400m³/h @ 600m @ 1120kw)



上海虹桥机场航空煤油输油管线
Hongqiao Airport Shanghai
(KY280–110x2 280m³/h @ 220m @ 220kw)



大连国家石油储备油库汽油泵
Dalian National Oil Stock Project
(TSY400–300–700 1500m³/h @ 100m @ 560kw)



中石化长岭分公司柴油泵
Sinopec Changling Co.,Ltd
TSY200–150–460(Q=500m³/h H=60m P=110KW)

码头、机场、油库

Seaport、Airport、Oil tank



中石化广东石油分公司仓储分公司汽油泵
Sinopec Oil Stock Guangdong Co
(KDY300–100x5 300m³/h @ 500m @ 560kw)



中石化管道储运分公司黄岛油库输油泵
Sinopec Pipeline company HUANGDAO oil transportation pump
KDY800–124 X 5(Q=800m³/h H=620m P=2000KW)

■ 中石化内蒙古石油分公司呼和浩特油库
中石化湖南成品油管道项目部油库机泵项目
中石化广东石油分公司黄埔油库
中石化管道储运公司镇海岚山原油商业储备库
中石油锦州石化原油码头项目
青岛港液体化工码头
上海天然气公司岱山码头原油中转站
湖南张家界荷花机场
济南遥翔机场航空煤油输油项目

Sinopec Inner Mongolia Petroleum Branch, Huhhot Oil Depot
Sinopec Hunan Oil Pipeline Project Department
Sinopec Guangdong Petroleum Branch, Huangpu Oil Depot
Sinopec Pipeline Storage and Transportation Company, Crude Oil Reserve
CNPC Jinzhou Petrochemical, Crude Oil Terminal Project
Qingdao Port Liquid Chemical Terminal
Shanghai Natural Gas Company, Daishan Terminal Crude Oil Transfer Station
Hunan Zhangjiajie Hehua Airport
Jinan Yaoxiang Airport Aviation Kerosene

炼油、乙烯及化工

Refinery、Ethylene & Chemical Process



中海油中捷石化TCE (OH₂) 泵
CNOOC ZOJE Petrochemical Co., Ltd. TCE(OH₂) Pump



中国石油化工股份有限公司长岭分公司
800万吨/年常减压装置原油泵
Changling branch of Sinopec 8 million tons/year Crude Distillation Unit
KDY1100-100×3 (Q=1100m³/h,H=300m,P=1400KW)



大连福佳·大化石油化工有限公司脱乙烷塔进料泵
Dalian Fukuyoshi-Dahua Petrochemical Co. Ltd. Deethanizer Feed Pump
TDC80-240/6(Q=85.3m³/h,H=418m,P=90KW)



青岛丽星仓储化工有限公司TCE(OH₂)装船泵
Qingdao Li Xing Storage Chemical Co., Ltd. TCE(OH₂) Shipment Pump

海南实华炼油化工有限公司
福建炼油化工有限公司
中海石油宁波大榭石化有限公司馏分油综合利用项目
中国石化镇海炼化分公司
中石化青岛石油化工有限公司
青岛迈安石化工程有限公司
腾龙芳烃（漳州）有限公司80万吨二甲苯工程
翔鹭石化（漳州）有限公司PTA项目
中石化石家庄炼化分公司
中化泉州石化有限公司
青岛丽星仓储化工有限公司
宁波海越丙烷和混合碳四综合利用项目
大连福佳69万吨芳烃芳构化项目轻烃改质装置
久泰能源（准格尔）有限公司甲醇深加工项目
中国寰球工程公司
新疆奎山宝塔石化有限公司
中海石油中捷石化有限公司柴油加氢精致装置
中化二建集团有限公司

Hainan Shihua Refining & Chemical Co.
Fujian oil refining & Chemical Co., Ltd.
CNOOC Ningbo Daxie Petrochemical Co. Ltd.
– Distillate comprehensive utilization project
Sinopec Zhenhai Refining & Chemical Company
Sinopec Qingdao Petroleum Chemical Co., Ltd.
Qingdao Maian Petrochemical Engineering Co. Ltd.
Dragon aromatics (Zhangzhou) Co. Ltd.
– 800000 tons of xylene engineering
Xianglu Petrochemical (Zhangzhou) Co., Ltd. PTA project
Sinopec Shijiazhuang Petrochemical Branch Company
Quanzhou Petrochemical Co., Ltd.
Qingdao Li Xing storage Chemical Co., Ltd.
Ningbo haiyue the propane and the comprehensive utilization of
hybrid carbon four projects
Dalian fujia 690000 tons of aromatics light hydrocarbon
– aromatization project modification device
Jiutai energy (Zhungeer) Co., Ltd.
– Deep processing of methanol project
China Huanqiu Contracting & Engineering Corp
Xinjiang Kuitun Baota Petrochemical Co. Ltd.
CNOOC ZOJE Petrochemical Co., Ltd.
– Diesel hydrogenation refined device
Sinopec Erjian Group Co. Ltd.



腾龙芳烃脱丁烷塔回流泵
Dragon Aromatics (Zhangzhou) Co. Ltd. Debutanizer Reflux Pump
TSJH250-700 (Q=800m³/h,H=147m,P=355KW)

其它 Others:

海洋石油绥中36-1项目
中海石油炼化东莞油品储运有限公司
洛克石油（渤海）公司
中海石油（中国）有限公司湛江分公司
南海石油西部公司涠洲岛码头装船泵
中国石化集团宁波工程有限公司
山东昌邑石化有限公司
陕西化建工程有限公司
青岛天安重交沥青有限公司
华油惠普科技股份有限公司
青岛红星物流实业有限责任公司
延长油田股份有限公司定边采油厂
舟山中际化工有限公司
中国航天空气动力技术研究院
中原油田分公司采油一厂
乌鲁木齐德塞石油设备公司

CNOOC Suizhong 36-1 project
CNOOC Dongguan refinery oil storage and Transportation Company Limited
Rock oil (Bohai) Company
CNOOC (China) Co., Ltd. Zhanjiang branch
The Western South China Sea oil company Weizhou Island Dock loading pump
China Petrochemical Group Ningbo Engineering Co., Ltd.
Shandong Changyi Petrochemical Co.
Shanxi Chemical-Engineering Construction Co
Qingdao Tian heavy traffic asphalt Co. Ltd.
HP Polytron Technologies Inc
Qingdao Red Star Logistics Industry Co., Ltd.
Shaanxi extension Petroleum (Group) Co., Ltd. Dingbian oil production plant
Zhoushan Zhongji Chemical Co. Ltd.
China Academy of Aerospace Aerodynamics
Oil production plant of Zhongyuan Oil Field Branch
Urumqi Dreiser oil equipment Co., Ltd.

海洋石油绥中36-1项目原油泵
CSPEC Suizhong 361 Project
(KSY1500-84 1500m³/h@84m@630kw)



中石化管道储运分公司南京输油处石埭桥泵站
Sinopec Pipeline company Nanjing oil transportation Shihuqiao Pump station
TSY250-200-520(Q=750m³/h,H=50m P=160kw)

海上平台服务
Offshore Service

中海油湛江涠洲12-2/11-4N油田海上平台注水泵
CNOOC Zhanjiang Weizhou 12-2/11-4N oilfield
offshore water injection pump
KDY100-150*8(Q=100M³/H,H=1480m n=3300rpm)



南海油田涠洲岛原油中转站装船泵
Weizhou Island South Sea Project
(KSY1500-65x2 1500m³/h@130m@710kw)

电厂、钢厂及其它工业水处理

Power Plant, Steel Plant, Industry Service



鞍钢股份有限公司输水泵
An Steel Co
(KY700-85X2 700m³/h @ 170m @ 500kw)

随着我国经济发展的需求，公司的产品正越来越多地应用于各种工业和城市供水场合，无论是从海洋，湖泊，河流，水库还是地下取水。奥星总为客户提供最可靠，最节能的泵产品。

Tane Ocean pumps have been contributing to the growth of Chinese industry by supplying water from sea, underground, lakes, ponds, rivers and reservoirs, for industrial purposes. Whatever the water sources are, Seoca has been successful in providing the most efficient and most reliable water supply equipment and system.



济南钢铁集团公司加压泵
Jinan Steel Co
(KY800-110x2 800m³/h @ 220m @ 710kw)



中国神华煤制油有限公司输水泵
China Shenghua Coal Change Oil Project
(KDY800-80x5 800m³/h @ 400m @ 1400kw)



福建联合石油化工循环水泵
Fujian Refining & Petrochemical Co., Ltd, Circulating Pump
(TS800-600-990 8000m³/h @ 58m @ 1600kw)

其它 Others:

青岛海晶化工集团股份有限公司
中国石化集团上海工程有限公司
沧州化学工业集团有限公司
甘肃窑街矿务局坑口电厂
湘潭钢铁集团有限公司
内蒙古呼和浩特自来水公司
马鞍山钢铁公司
上海杨树浦电厂
大庆油田龙凤电厂
河南淇县电厂
攀枝花钢铁公司
山东华能辛店电厂
葛州坝电厂
印尼Adipala66万千瓦超临界燃煤电站
湖南华电长沙电厂2X600MW机组

Qingdao Haijing Chemical industry group
Sinopec Shanghai Engineering Co., Ltd
Cangzhou Chemical industry group
Gansu Yaojie Mining Bureau
Xiangtan Iron group
Hohhot Inner Mongolia Water Company
Ma' anshan Iron group
Shanghai yangshupu power plant
Longfeng Power plant of Daqing Oil filed
Henan Qixian Power plant
Panzhuhua Iron Company
Shandong huaneng Xindian Power plant
Gezhou Dam power plant
Indonesia Adipala 0.66 million KW overcritical power station
Hunan huadian Changsha power station 2X 600MW unit

城市供排水及消防

City Water Supply and Fire-fighting

其它 Others:

广东恩平自来水公司
广东东升自来水厂
新疆克拉玛依友谊大厦
广东番禺自来水厂
大庆市自来水厂
山西长治供水公司
湖北丹江口自来水厂

Guangdong Enping tap water company
Guangdong Dongsheng waterworks
Xinjiang Karamay friendship building
Guangdong Panyu waterworks
Daqing waterworks
Shanxi Changzhi water supply company
Hubei Danjiangkou water works



太原市汾河景区绿化美化工程加压泵
Taiyuan Irrigation Project
(ISG125-300 250m³/h @ 30m @ 30kw)



英德市北江防护体系建设管理局排涝泵
Yingde Drainage Pumping Station
(1000TTV-8.7 11232m³/h @ 9.7m @ 1280kw)



浙江中奥能源有限公司消防泵
Zhejiang Medium Energy Co., Ltd, Fire-fighting Pumps
(XBC8/340GTY 1224m³/h @ 80m @ 520hp)



河北邯郸市应急供水工程加压泵
Hebei Handan Water Supply Project
(20SAP-10B 2100m³/h @ 44m @ 355kw)

农业排灌及水利工程

Wilrrigation and Water Conservancy Project

山西万家寨引黄工程排水泵
Shanxi Wanjiashai Yellow River Project
(300TTV 210-11x9 210m³/h@95m@ 90kw)



大禹渡引黄工程提水泵
Dayudu Yellow River Project
(KSY1900-105x2 1900m³/h@210m@1400kw)



中国机械进出口公司缅甸排灌项目
CMC Myanmar National Irrigation Project
(TS600-500-550 3600m³/h@ 14m@250kw)



甘肃白银供水工程提水泵
Gansu Baiyin Water Supply Project
(32SAP-10B 9144m³/h@50m@1600kw)



云南玉溪市三湖生态保护水资源配置应急工程项目
Yunan Yuxi east zone Ji' san lake environment protection
water resource emergency engineering project
KSY2250-180*2
(Q=2250m³/h,H=356m,n=1480rpm,P=3150KW)

国外主要工程

Projects Worldwide

从1990年开始，奥星公司的泵产品开始进入国际市场，现已远销六十多个国家与地区，在三十多个国家设有代理商，公司产品已走向世界，服务全球。

Tane Ocean Pump was exported to the international market since 1990, the products was exported to more than 60 different countries. And more 30 countries have product's sole agents. Tane Ocean Pump will win more orders with it's good quality and price when the client know more about it.



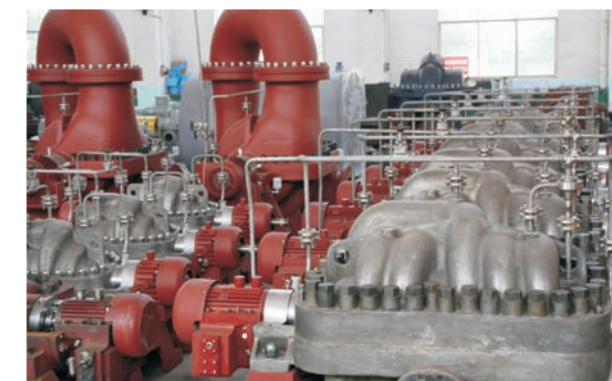
出口伊朗多级泵 Multistage Pumps to Iran



出口到美国的中开泵 TS Pumps to American



出口到马来西亚水厂的中开泵
TS Pumps in Malaysia



出口到伊朗的原油输送泵
Crude Oil Pumps to Iran



出口到英国的立式泵
TTV Pumps to UK



我们的成绩
OUR

Achievements

多工况输油泵国产化

Multi-condition Oil Transfer Pump Localization

【中国石化新闻网讯】2013年2月18日，国内首例满足多种工况的国产输油泵，在广州石化华德公司南边灶油库通过72小时的连续平稳运行考核，成功投入生产使用。该泵在恒速电机驱动下，能同时满足1400立方米/时、1100立方米/时和650立方米/时三种流量下工艺运行要求，为广州石化原油长输管线安全平稳供油提供了可靠保障。

经测试，输油泵工艺性能、振动、泄漏等各项技术参数均达到API610和API682标准中相应A类指标，各项性能达到同类进口设备水平，成功实现了长输管道输油泵的国产化。

On February 18, 2013, in Guangzhou Petrochemical Huade Company Nanbianzao oil depot, the domestic first meet various conditions of domestic oil transfer pump, through 72 hours of continuous and stable operation of the assessment, put into production successfully. The pump under the constant speed motor drive, which can meet the requirements of 1400 m³/h, 1100 m³/h and 650 m³/h, under three kinds of flow rate, which provides a reliable guarantee for the safe and stable supply of Guangzhou Petrochemical crude oil pipeline.

After the test, the technology parameters of the long – distance pipeline transportation pump, such as the technology, vibration, leakage and so on, are reached API610 and API682 corresponding class A in the standard, various performance up to the level of the similar imported equipment, successfully realized the long distance pipeline of oil transfer pump localization.



天一奥星的产品在以下国家设有销售代理商

You can find the sale agent of Tane Ocean Pump in the following countries



奥星设计建造的委内瑞拉排灌泵站
Hdrainage Pumping Station Design by Tane Ocean in Venezuela

奥星设计建造的圭亚那糖厂排灌泵站
Irrigation Pumping Station Design by Tane Ocean in Guyanan Sugar Factory



其它 Others:

荷兰 Netherlands	巴林 Bahrain
南非 South Africa	意大利 Italy
阿联酋 U.A.E	约旦 Jordan
西班牙 Spain	智利 Chile
哥伦比亚 Colombia	印尼 Indonesia
埃及 Egypt	苏丹 Sudan
斯里兰卡 Sri Lanka	科威特 Kuwait
沙特 Saudi Arabia	卡塔尔 Qatar
新加坡 Singapore	孟加拉 Bangladesh
泰国 Thailand	土耳其 Turkey
尼日利亚 Nigeria	马尔他 Malta
葡萄牙 Portugal	塞浦路斯 Cyprus

